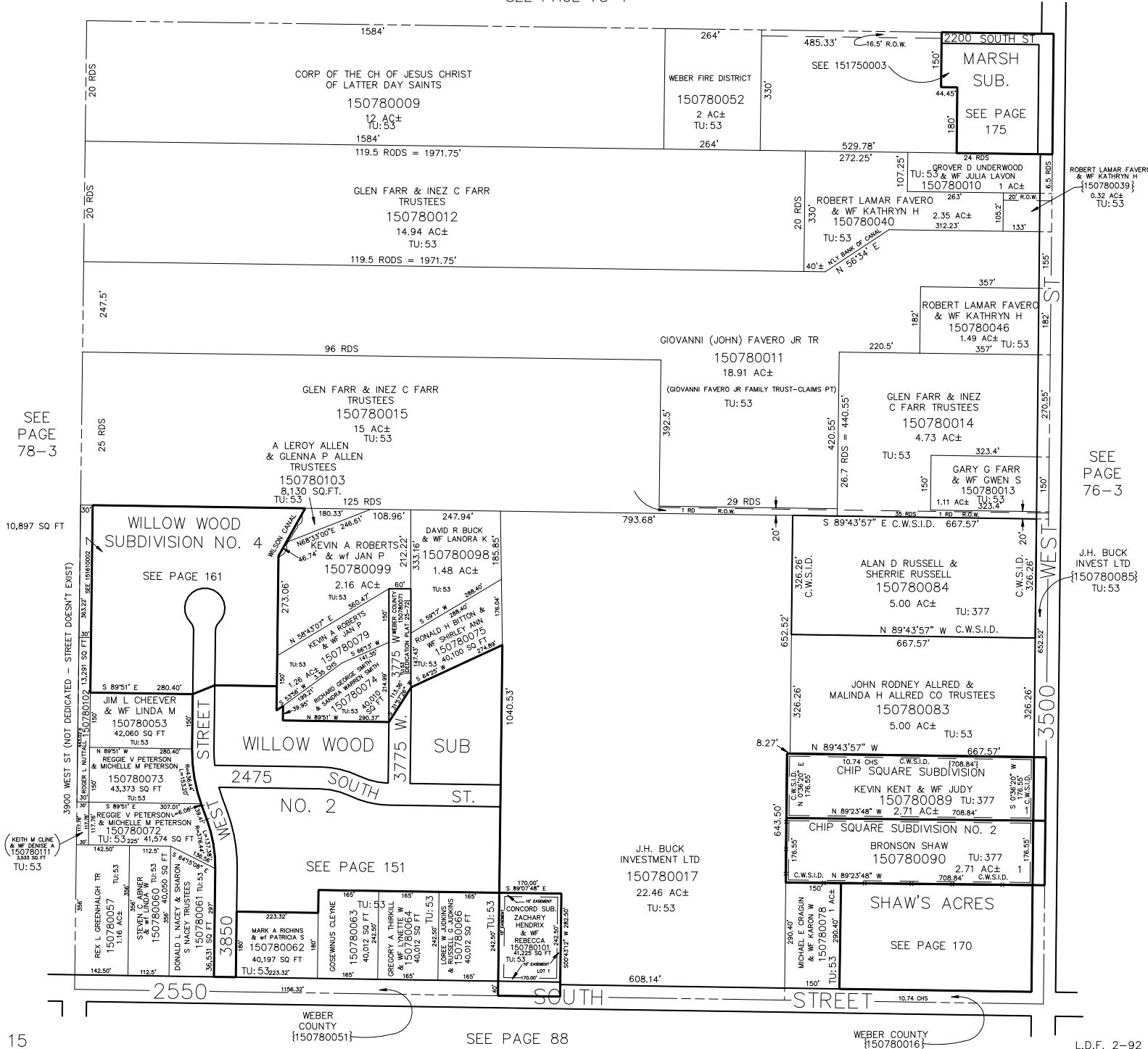


S.E. 1/4  
SECTION 28, T.6N., R.2W., S.L.B. & M.

IN WEBER COUNTY  
SCALE 1" = 200'

TAXING UNIT: 53, 377

SEE PAGE 78-1



SEE PAGE 78-3

ROBERT LAMAR FAVERO & WF KATHRYN H  
{150780039}  
0.32 AC±  
TU: 53

SEE PAGE 76-3

J.H. BUCK INVEST LTD  
{150780085}  
TU: 53

WEBER COUNTY  
{150780051}

SEE PAGE 88

WEBER COUNTY  
{150780016}